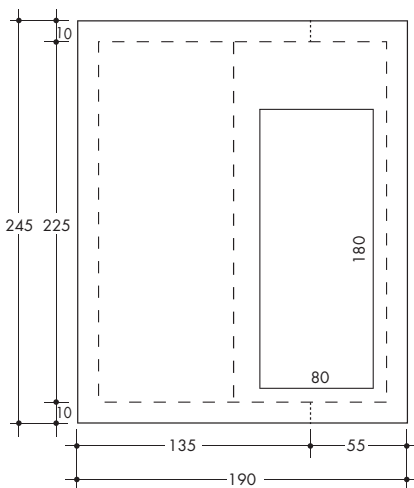
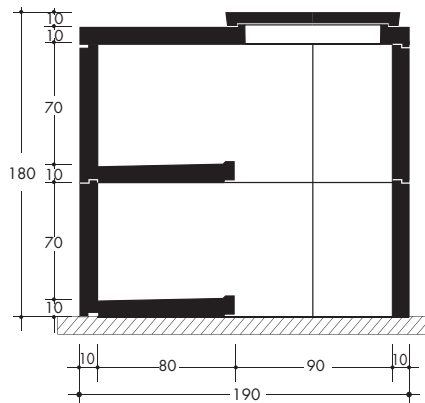
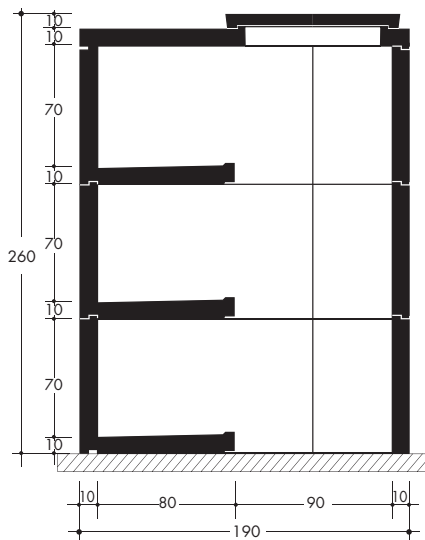
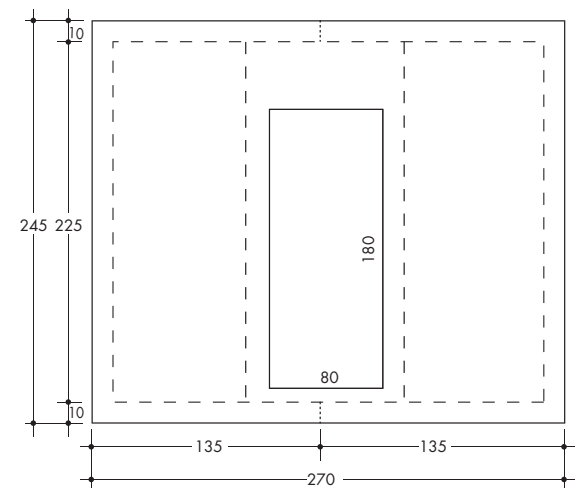
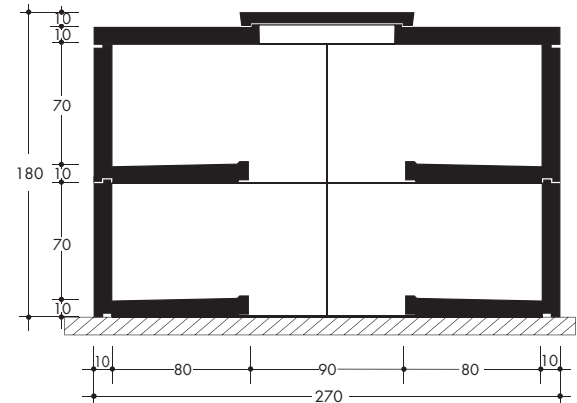
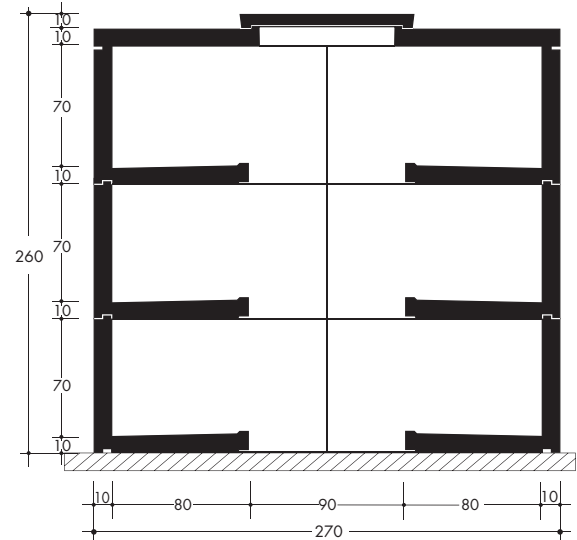


## VESTIBOLO LATERALE



## VESTIBOLO CENTRALE



CODICE PRODOTTO	TIPOLOGIA PRODOTTO	PESO TOTALE kg	PESO SINGOLO kg
<b>TOM2L</b>	<b>TOMBA A 2 POSTI VESTIBOLO LATERALE</b>	4900	1250
<b>TOM3L</b>	<b>TOMBA A 3 POSTI VESTIBOLO LATERALE</b>	6800	1250
<b>TOM4L</b>	<b>TOMBA A 4 POSTI VESTIBOLO LATERALE</b>	8700	1250
<b>TOM4C</b>	<b>TOMBA A 4 POSTI VESTIBOLO CENTRALE</b>	6550	1250
<b>TOM6C</b>	<b>TOMBA A 6 POSTI VESTIBOLO CENTRALE</b>	9050	1250
<b>TOM8C</b>	<b>TOMBA A 8 POSTI VESTIBOLO CENTRALE</b>	11550	1250